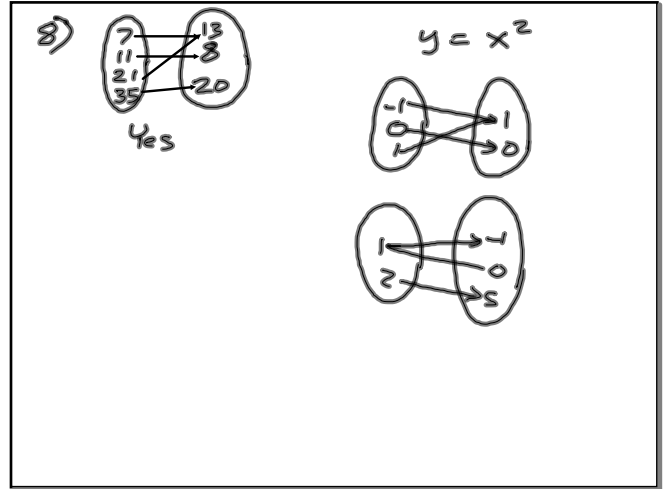


Algebra I
pg. 38

- 1) input, output
 2) independent: a
 dependent: b
 5) $D = \{6, 12, 21, 42\}$
 $R = \{5, 7, 10, 17\}$
 6) function
 7) not a function
 8) function
 9) It IS a function because each
 input is paired with exactly
 one output.
 10) Domain is 1, 2, 3, 4, and 5.
 12) B
 13) A
- 16) $R = \{4, 19, 25, 34\}$
 17) $R = \{5, 6, 7.5, 8.5\}$
 18) $R = \{3, \frac{13}{3}, \frac{17}{3}, \frac{25}{3}\}$
 20) $y = x + 2.2$
 21) $y = x - 8$
 25) $y = 100 + 20x$,
 x : independent, y : dependent,
 $D = \{0, 1, 2, 3, 4, 5, 6, 7,$
 $8, 9, 10, 11, 12\}$
 $R = \{120, 140, 160, 180, 200, 220,$
 $240, 260, 280, 300, 320, 340\}$
 \$340
 28) a: $h = c + 8$
 b: 38 mi/gal
 c: ~~≈ \$364~~
 \$634
 30) D
 31) A



25) $y = 100 + 20x$
 ind. $\Rightarrow x$, number
 of months
 dep $\Rightarrow y$, dollars
 $y = 100 + 20(12)$
 $y = 100 + 240$
 $= 340$

28) $24 \rightarrow 32$
 $26 \rightarrow 34$
 $27 \rightarrow 35$
 $28 \rightarrow 36$
 $y = x + 8$
 $h = c + 8$
 b) $h = 30 + 8$
 $h = 38 \text{ mi/gal}$

$\hookrightarrow \frac{11,550}{c} + \frac{9450}{h} = ?$
 $\frac{11,550}{30} + \frac{9450}{38}$
 $385 + 248.68$
 $\boxed{\$ 633.68}$